



echoSafe and McAfee Personal Firewall Pro

Some echoSafe users might experience problems connecting to echoSafe backup due to **McAfee Personal Firewall Pro** installed on their computer. echoSafe should work with any firewall and router hardware/software.

echoSafe needs unrestricted outgoing/incoming TCP connections to TCP port 308. If you fail to connect to echoSafe network, it is likely that your firewall is blocking this connection and you need to open it up.

This is only necessary for echoSafe backup to be able to connect to the echoSafe network and will not make your network any less secure.

Please e-mail us at support@echoSafe.com to report in detail all the instances when you have experienced a problem with echoSafe and a firewall.

We've included information on how to set the **McAfee Personal Firewall Pro** to allow echoSafe backup to run.

McAfee Personal Firewall Pro

Opening McAfee Security Center

Open McAfee McAfee Security Center and click on 'Personal Firewall ' tab.

The screenshot shows the McAfee SecurityCenter application window. The title bar reads "McAfee SecurityCenter". The interface features the McAfee Security logo and "SecurityCenter" text. Navigation links for "Updates", "Support", and "Help" are visible. The main content area is divided into two sections: "My Security Index" and "My Service Status".

My Security Index
These indices measure how secure your computer is. An index value of 10 is best, while 1 indicates a potential security risk.

Index Name	Value	Progress Bar	Info Icon
My Security Index	3.7	Yellow bar (approx. 37%)	Info icon
My AntiVirus Index	1.0	Red bar (approx. 10%)	Info icon
My AntiHacker Index	10.0	Green bar (100%)	Info icon
My AntiAbuse Index	1.0	Red bar (approx. 10%)	Info icon
My AntiSpam Index	1.0	Red bar (approx. 10%)	Info icon

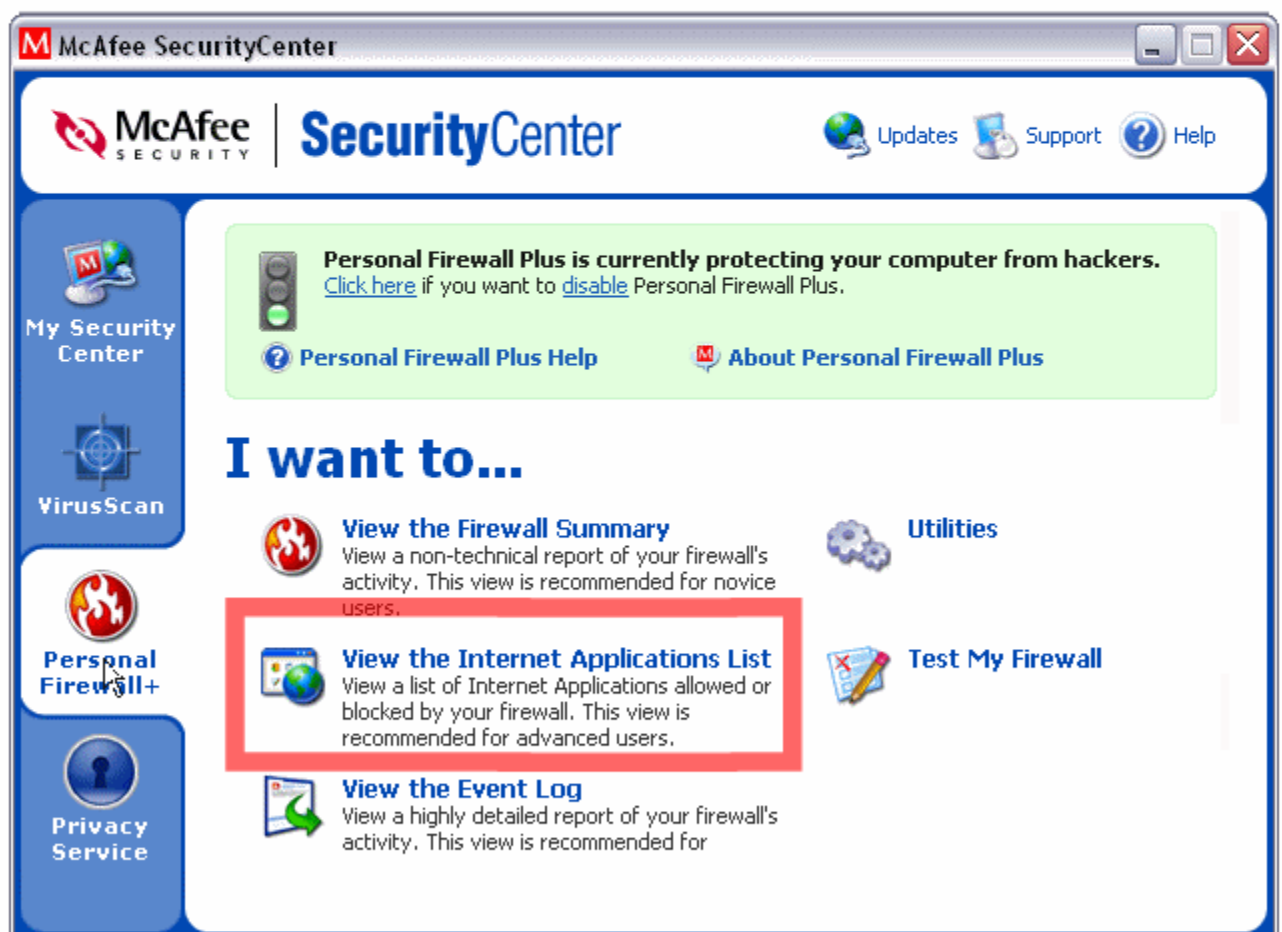
My Service Status
Specifies which McAfee security services are protecting your computer.

Service	Status
VirusScan	Not Installed
Personal Firewall Plus	Protecting

The left sidebar contains navigation buttons for "My Security Center", "VirusScan", "Personal Firewall+", and "Privacy Service". The "Personal Firewall+" button is highlighted with a red border.

Internet Applications List

Find the 'View the Internet Applications List' link and click on it. A new window will open.



The screenshot shows the McAfee SecurityCenter application window. The title bar reads "McAfee SecurityCenter". The main interface features the McAfee SecurityCenter logo and navigation links for Updates, Support, and Help. A green notification banner at the top states: "Personal Firewall Plus is currently protecting your computer from hackers. Click here if you want to disable Personal Firewall Plus." Below this are links for "Personal Firewall Plus Help" and "About Personal Firewall Plus".

The "I want to..." section is highlighted with a red border. It contains the following options:

- View the Firewall Summary**: View a non-technical report of your firewall's activity. This view is recommended for novice users.
- View the Internet Applications List**: View a list of Internet Applications allowed or blocked by your firewall. This view is recommended for advanced users. (This option is highlighted with a red border in the image.)
- View the Event Log**: View a highly detailed report of your firewall's activity. This view is recommended for...

Other options visible include "Utilities" and "Test My Firewall". The left sidebar contains icons for "My Security Center", "VirusScan", "Personal Firewall+", and "Privacy Service".

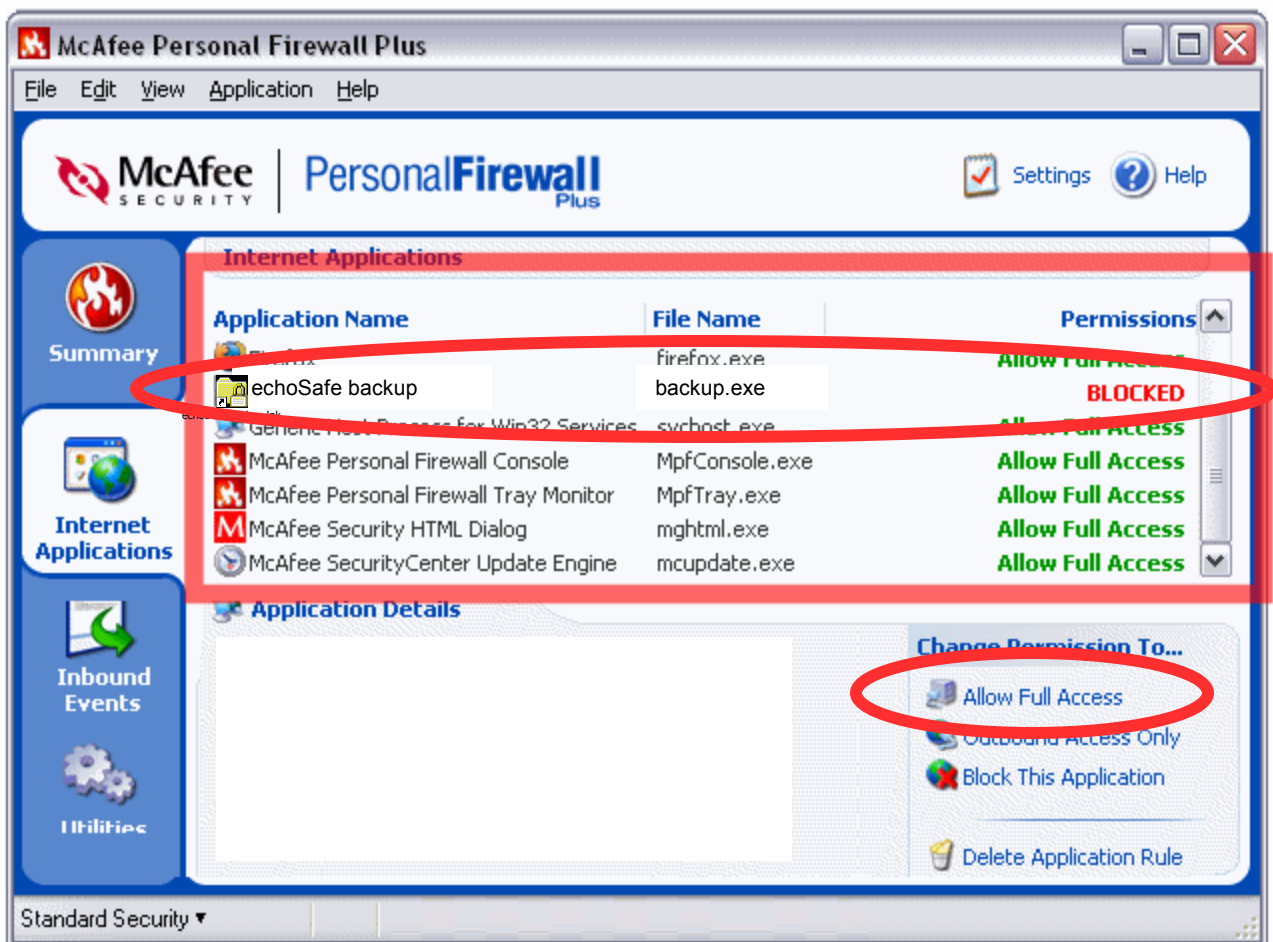
Options in McAfee Firewall

Find the echoSafe section. Click on the echoSafe backup line to select it.



Changing Settings

We recommend that you select 'Allow Full Access' for all the available options for echoSafe.



Close and Try echoSafe

Close McAfee Firewall and try echoSafe backup.

