



## echoSafe and Zone Alarm Pro Firewall

Some echoSafe users might experience problems connecting to echoSafe backup due to installed **Zone Alarm Pro Firewall** on their computer. echoSafe should work with any firewall and router hardware/software.

echoSafe needs unrestricted outgoing/incoming TCP connections to TCP port 308. If you fail to connect to echoSafe network, it is likely that your firewall is blocking this connection and you need to open it up.

This is only necessary for echoSafe backup to be able to connect to the echoSafe network and will not make your network any less secure.

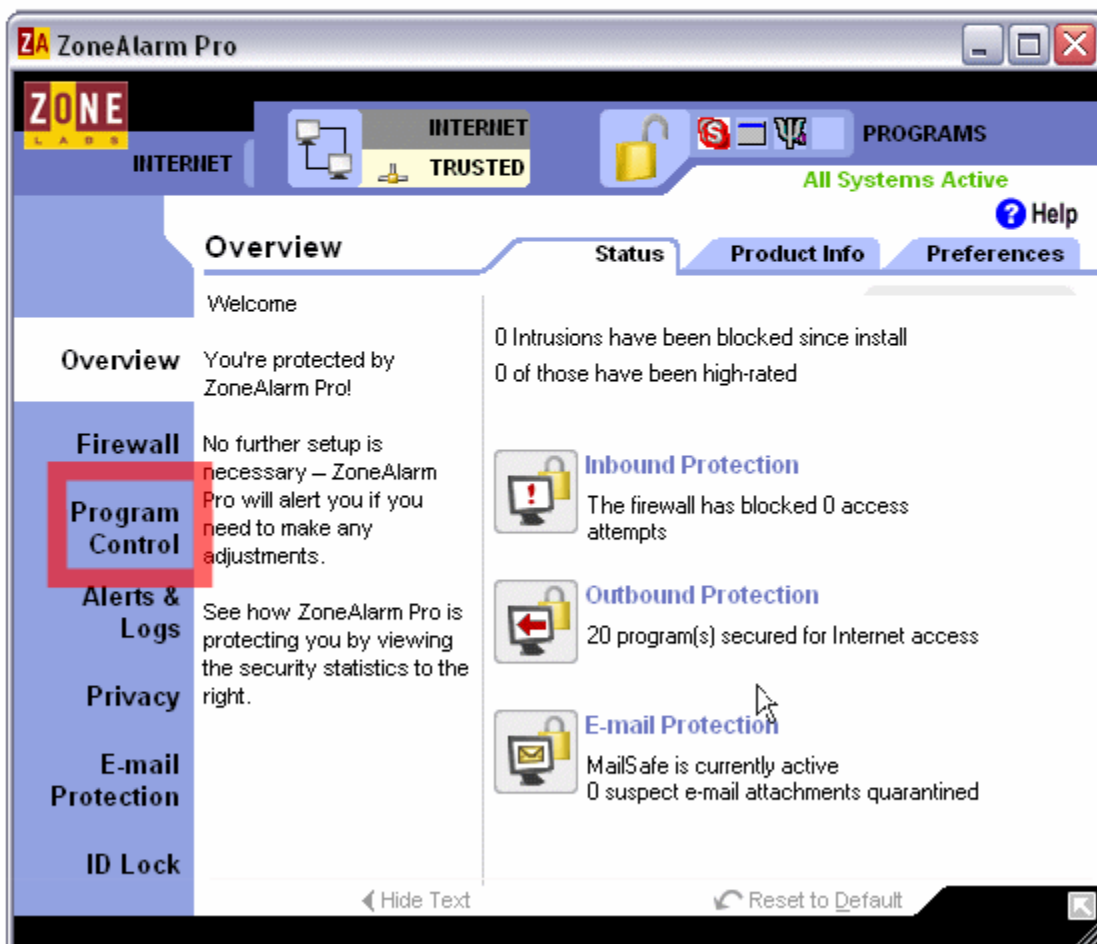
Please e-mail us at [support@echoSafe.com](mailto:support@echoSafe.com) to report in detail all the instances when you have experienced a problem with echoSafe and a firewall.

We've included information on how to set the **Zone Alarm Pro Firewall** to allow echoSafe backup to run.

# Zone Alarm Pro

## Opening Zone Alarm Pro

Open Zone Alarm Pro and click on 'Program Control'.



## Program Control

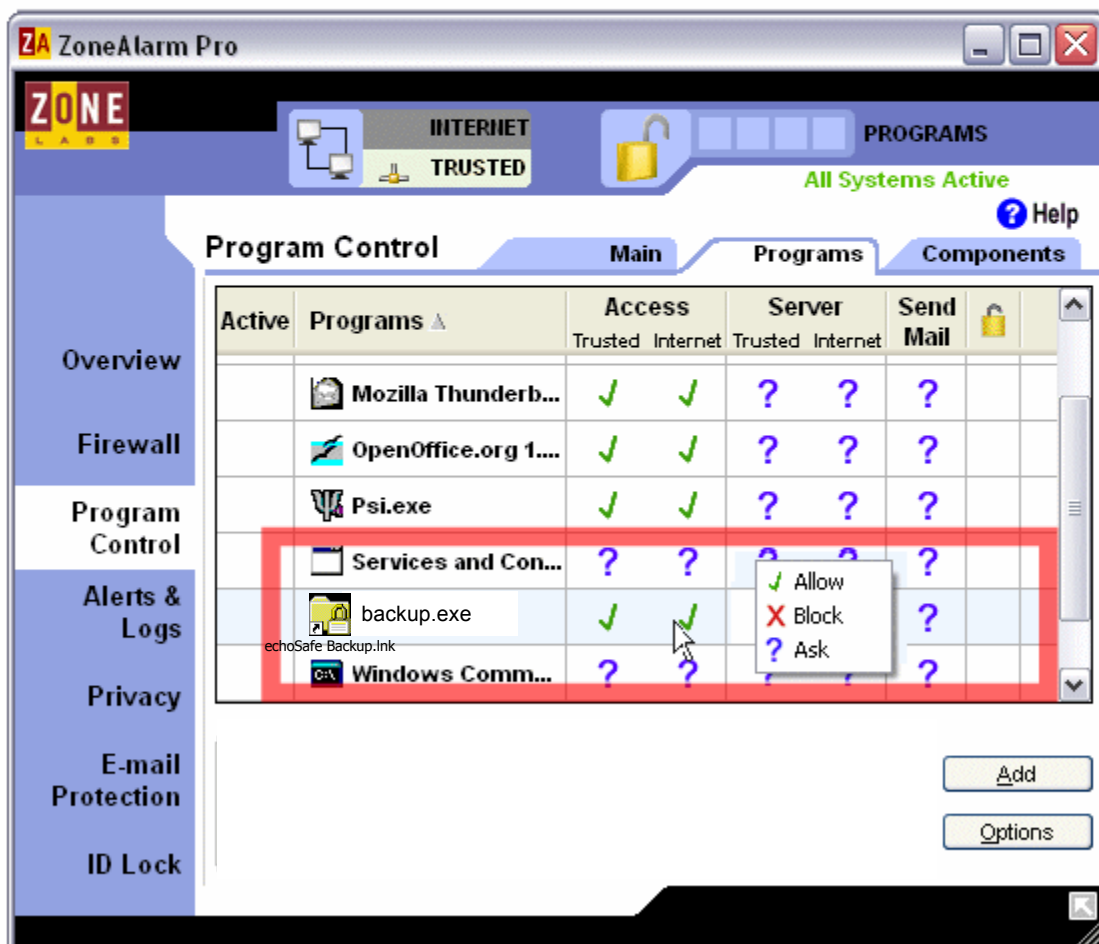
Select the 'Programs' tab, if it wasn't selected already, and find the line listing echoSafe

The screenshot shows the ZoneAlarm Pro interface. The 'Programs' tab is selected. The 'Program Control' section displays a table of active programs. The table has columns for 'Active', 'Programs', 'Access' (Trusted Internet), 'Server' (Trusted Internet), and 'Send Mail'. The 'Services and Con...' row is highlighted with a red box, and the 'backup.exe' row is also highlighted with a red box. The 'echoSafe Backup.Ink' text is visible below the 'backup.exe' row.

Active	Programs	Access		Server		Send Mail
		Trusted	Internet	Trusted	Internet	
	Mozilla Thunderb...	✓	✓	?	?	?
	OpenOffice.org 1....	✓	✓	?	?	?
	Psi.exe	✓	✓	?	?	?
	Services and Con...	?	?	?	?	?
	backup.exe	✓	✓	?	?	?
	Windows Comm...	?	?	?	?	?

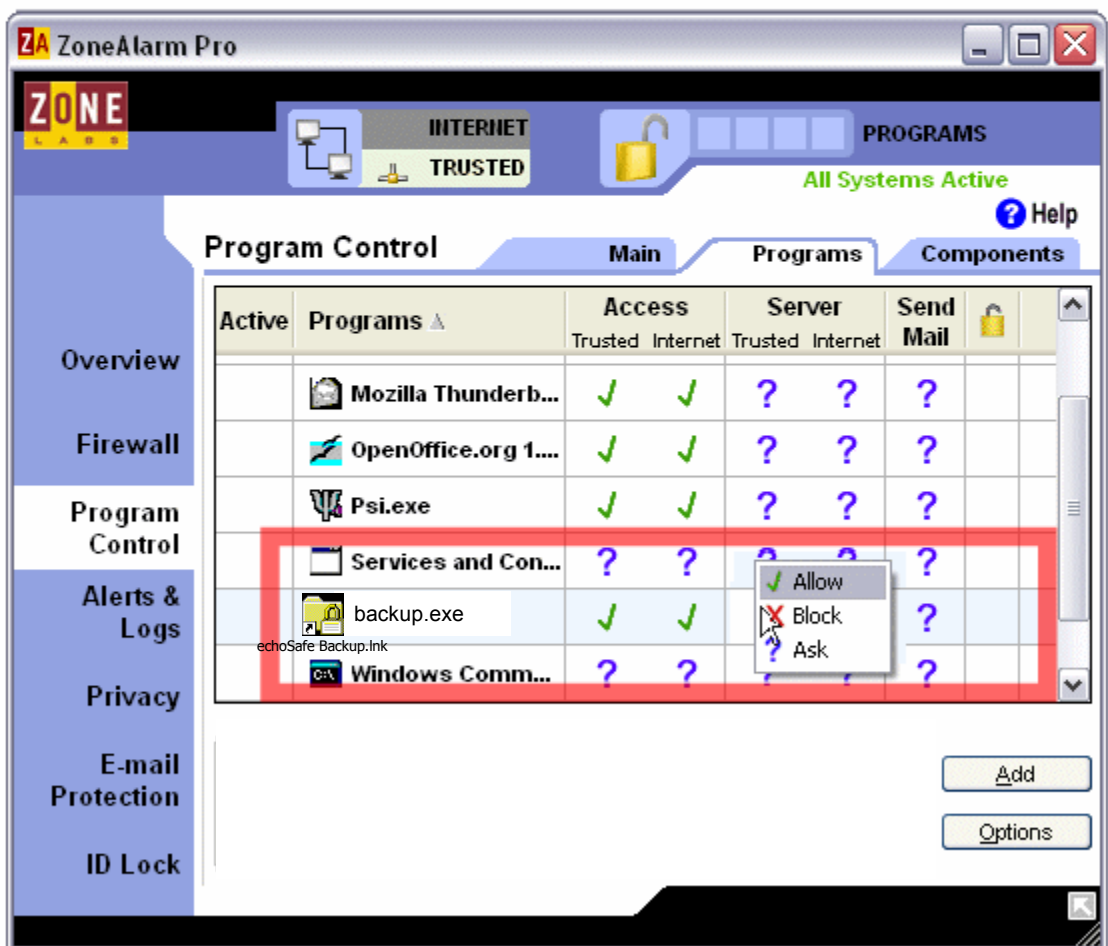
## Selecting Program

Select the line containing echoSafe and then right-click under Server Trusted to open the options menu. Set the option to 'Allow'.



## echoSafe Options in Zone Alarm Pro

On the same line, right click under 'Send Mail' and set the option to 'Block'. There should be four green checkmarks displayed on the left and one red 'X' displayed on the right.



## Close and Test echoSafe

Close the Zone Alarm configuration window. You should be able to use echoSafe now.

